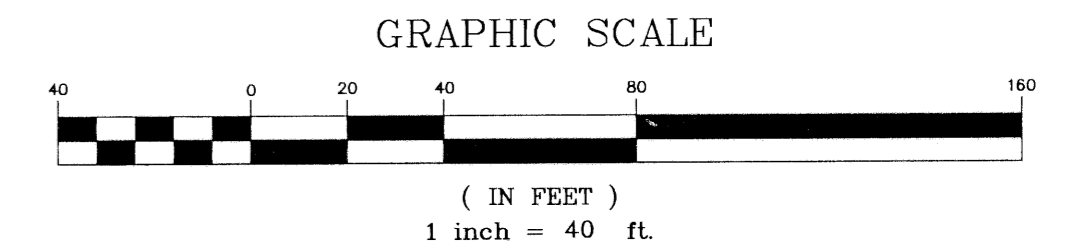
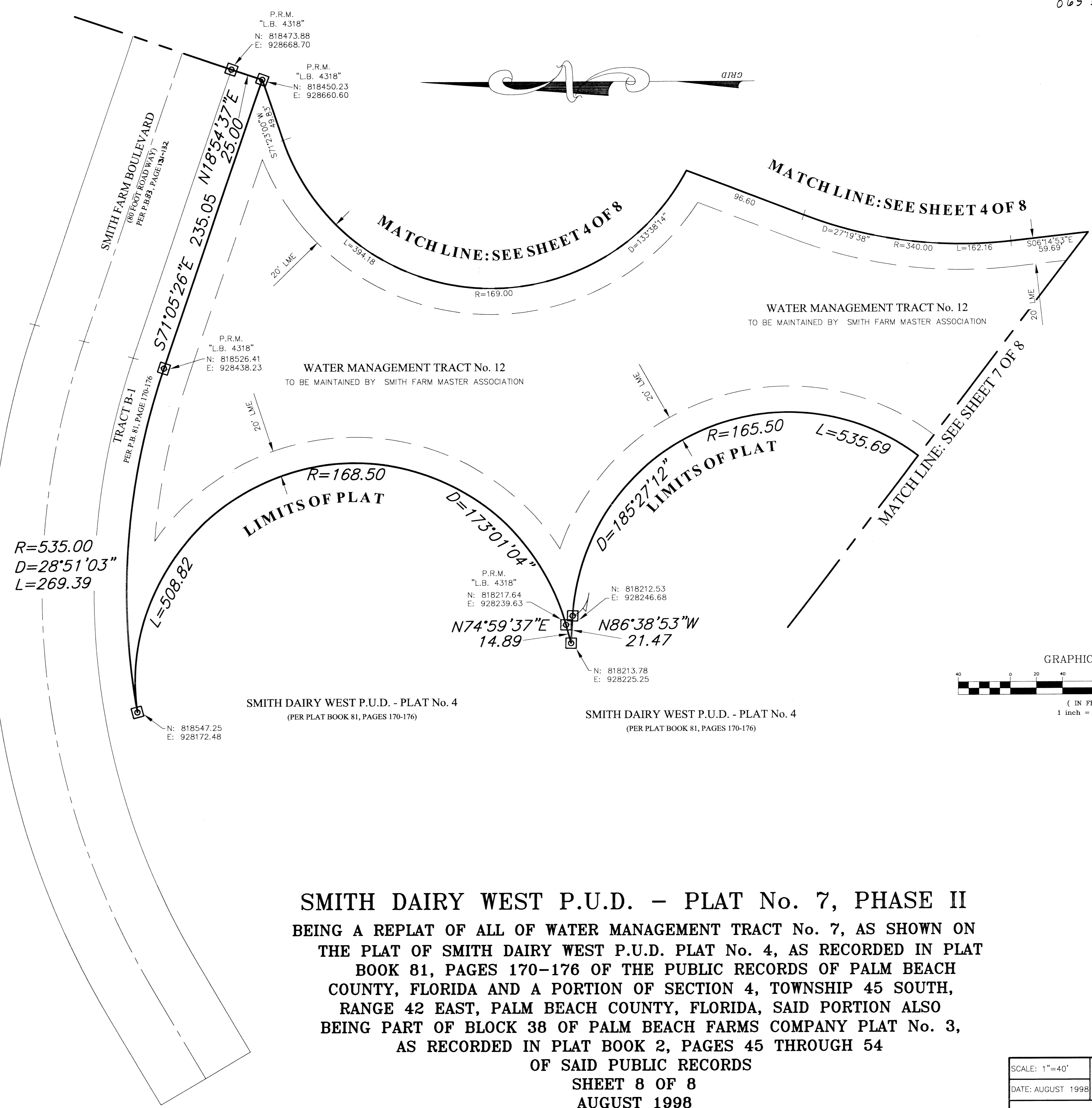
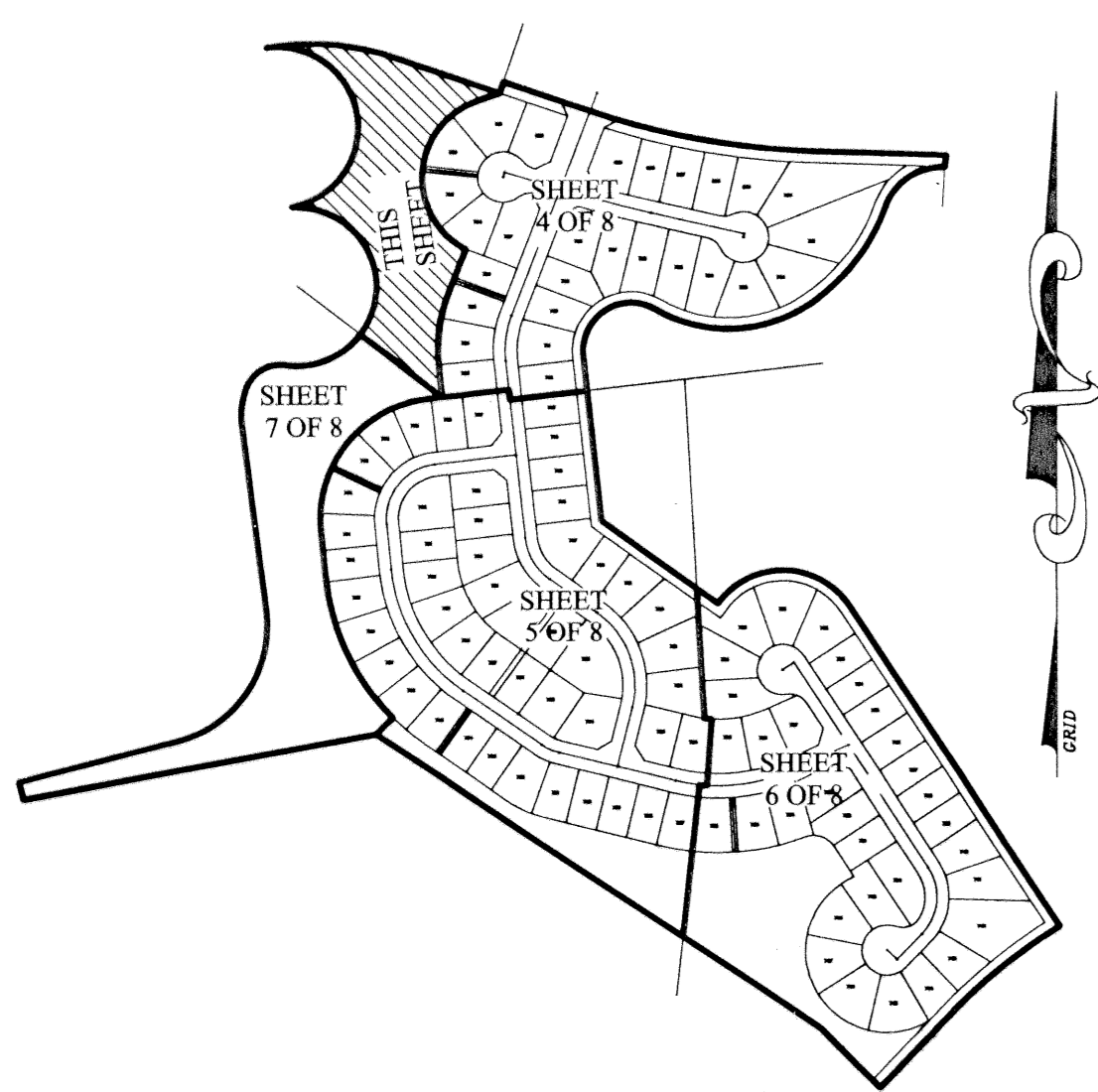


**SHEET INDEX:**




**LEGEND:**

- ◻ = PERMANENT REFERENCE MONUMENT "P.L.S. 4828"
- = PERMANENT CONTROL POINT "P.C.P. 4828"
- R = RADIUS
- A = ARC LENGTH
- Δ = DELTA (CENTRAL ANGLE)
- PC = POINT OF CURVATURE
- CB = CHORD BEARING
- CD = CHORD DISTANCE
- P.U.D. = PLANNED UNIT DEVELOPMENT
- PSM = PROFESSIONAL SURVEYOR & MAPPER
- PLS = PROFESSIONAL LAND SURVEYOR
- LME = LAKE MAINTENANCE EASEMENT
- N = NORTHING (GRID)
- E = EASTING (GRID)
- (C) = CALCULATED
- (R) = RADIAL
- LAE = LIMITED ACCESS EASEMENT
- L.B. = LICENSED BUSINESS
- P.R.M. = PERMANENT REFERENCE MONUMENT

**SMITH DAIRY WEST P.U.D. - PLAT No. 7, PHASE II**  
 BEING A REPLAT OF ALL OF WATER MANAGEMENT TRACT No. 7, AS SHOWN ON  
 THE PLAT OF SMITH DAIRY WEST P.U.D. PLAT No. 4, AS RECORDED IN PLAT  
 BOOK 81, PAGES 170-176 OF THE PUBLIC RECORDS OF PALM BEACH  
 COUNTY, FLORIDA AND A PORTION OF SECTION 4, TOWNSHIP 45 SOUTH,  
 RANGE 42 EAST, PALM BEACH COUNTY, FLORIDA, SAID PORTION ALSO  
 BEING PART OF BLOCK 38 OF PALM BEACH FARMS COMPANY PLAT No. 3,  
 AS RECORDED IN PLAT BOOK 2, PAGES 45 THROUGH 54  
 OF SAID PUBLIC RECORDS  
**SHEET 8 OF 8**  
**AUGUST 1998**

Smith Dairy West  
 PUD NAME  
 ZIP CODE 33447  
 ZONING PUD  
 QUAD # 47  
 FLOOD MAP # 170A  
 PAGE 82  
 PLAT # 7, Phase II  
 Smith Dairy West

SCALE: 1"=40'	 <b>NICK MILLER, INC.</b> Surveying & Mapping Consultants
DATE: AUGUST 1998	
<b>SMITH DAIRY WEST P.U.D. - PLAT No. 7, PHASE II</b>	
2560 RCA Blvd., Suite 105 Palm Beach Gardens, Florida 33410 (561) 627-5200 D.B.P.R. Business License No. 4318	DRAWING NUMBER <b>94014CR</b>